

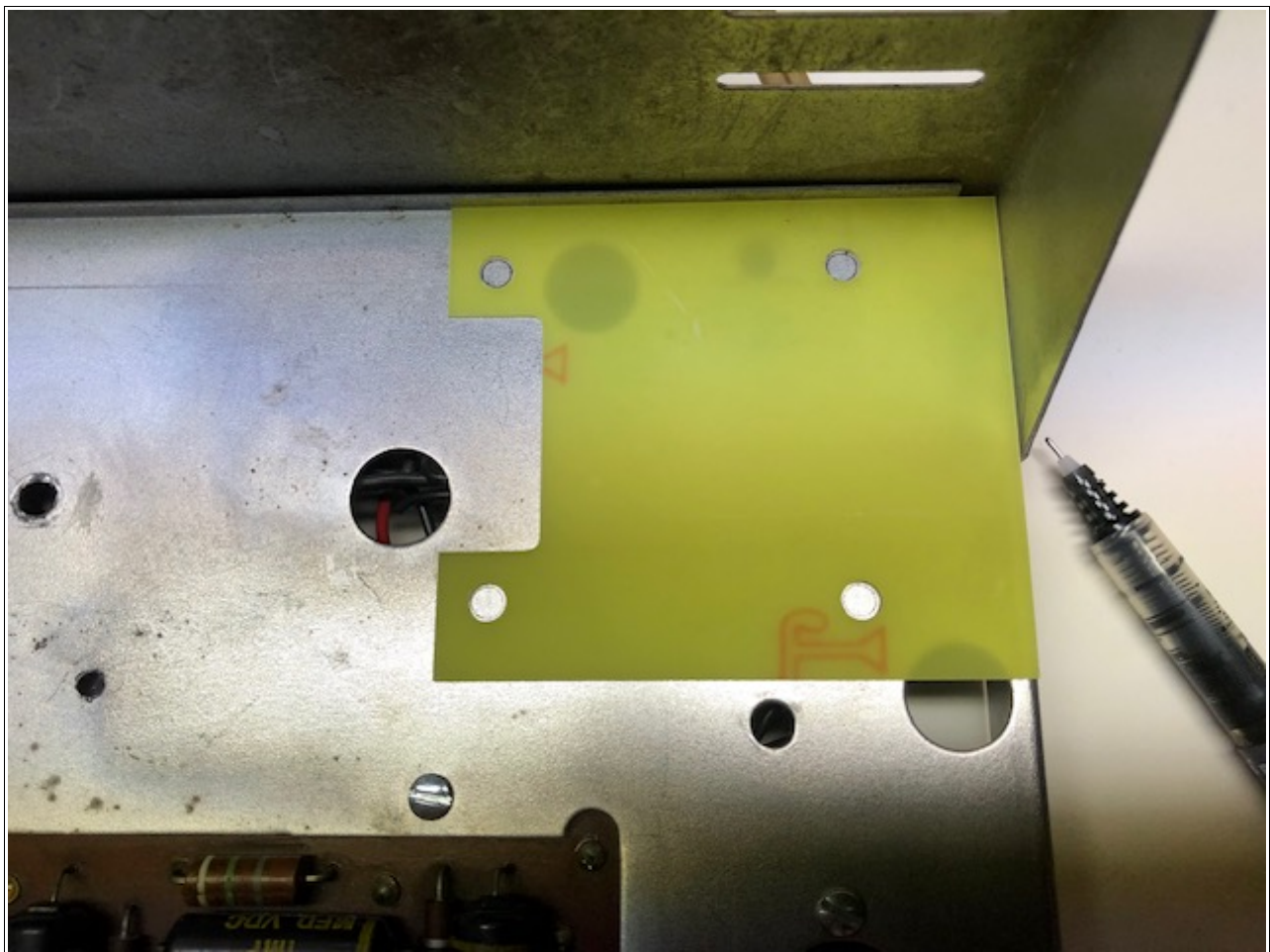
## PA-211-B Installation in an original Dynaco PAS Preamplifier

Installing the PA-211-B transformer will require you to drill (4) 3/16" diameter holes in the base panel of your original Dynaco PAS chassis.

Your purchase of the PA-211-B transformer includes a drilling template and all required mounting hardware.

Note: Our new production (2025) Dynakit PAS chassis already has these (4) holes in the base panel.

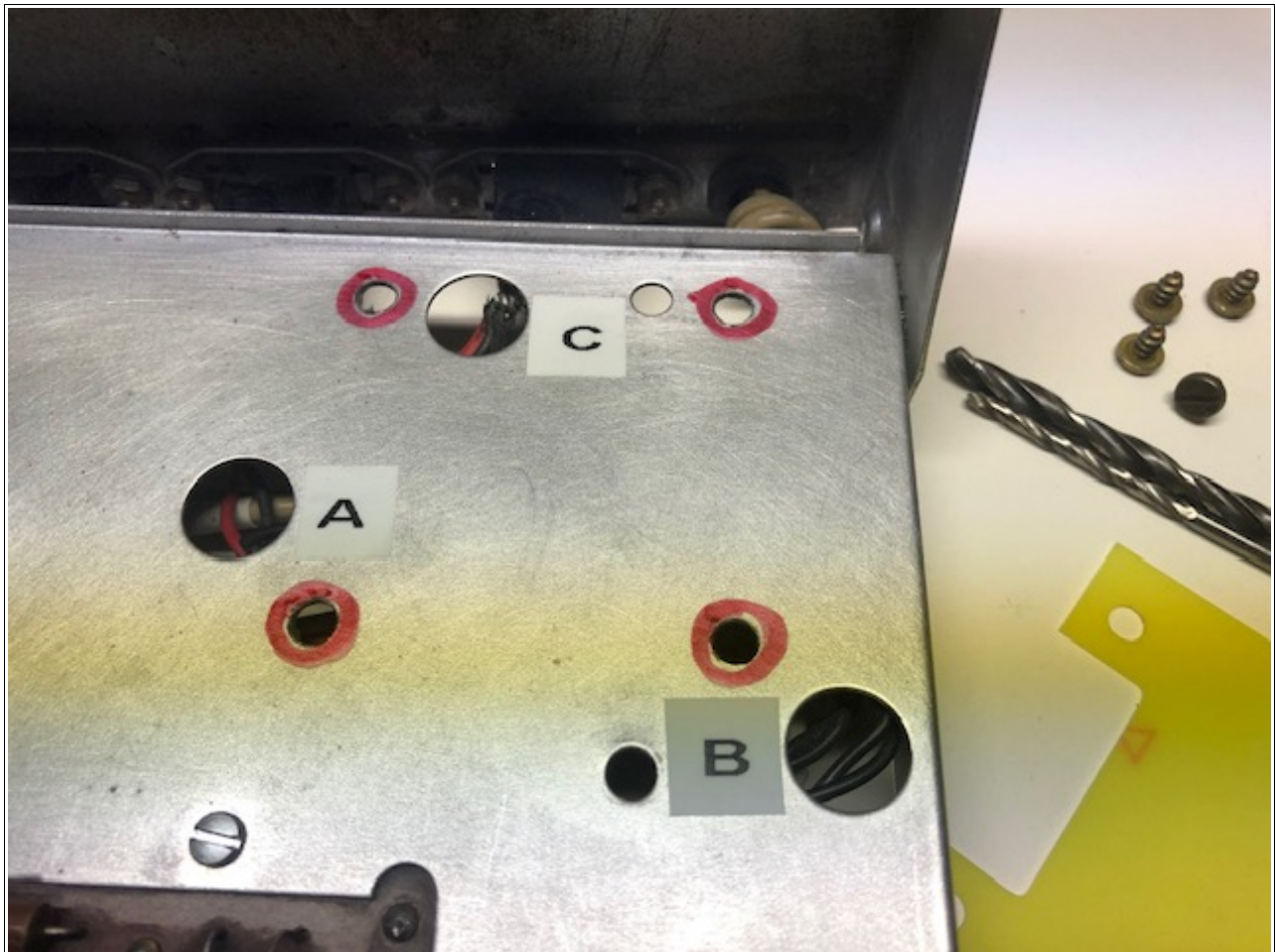
PHOTO "A"



As shown in Photo (A) position the template and mark the (4) holes for drilling.

As shown in Photo (B) remove the (4) sheet metal screws that secures the rear panel to the base panel and separate both panels just enough to allow clearance for hole drilling. We suggest drilling smaller pilot holes before drilling the final 3/16" holes. These holes are best drilled from the topside of the base panel. Insure that there are no leads or components below the panel that will interfere with the (4) hole drilling locations. On a stock PAS the only potential issue may be the power cord...just move this aside from the path of the drill. Always use a sharp drill & avoid exerting too much force when drilling the base panel. Support the base panel's drilling area with a block of wood if you are concerned with bending the panel.

PHOTO "B"



Orientate the transformer as shown in Photo (C) with the (2) Black leads routed through hole (A) and the (2) Blue leads routed directly to your (topside) filament supply. The (2) Red leads & (1) Red/Yellow CT lead are then routed through hole (B). Note: Hole (C) is no longer used.

Bolt the PA-211-B securely to the base panel via the provided hardware with the (4) large fender washers located on the underside of the base panel. Now re-attach the rear panel to the base panel using the (4) original sheet metal screws.

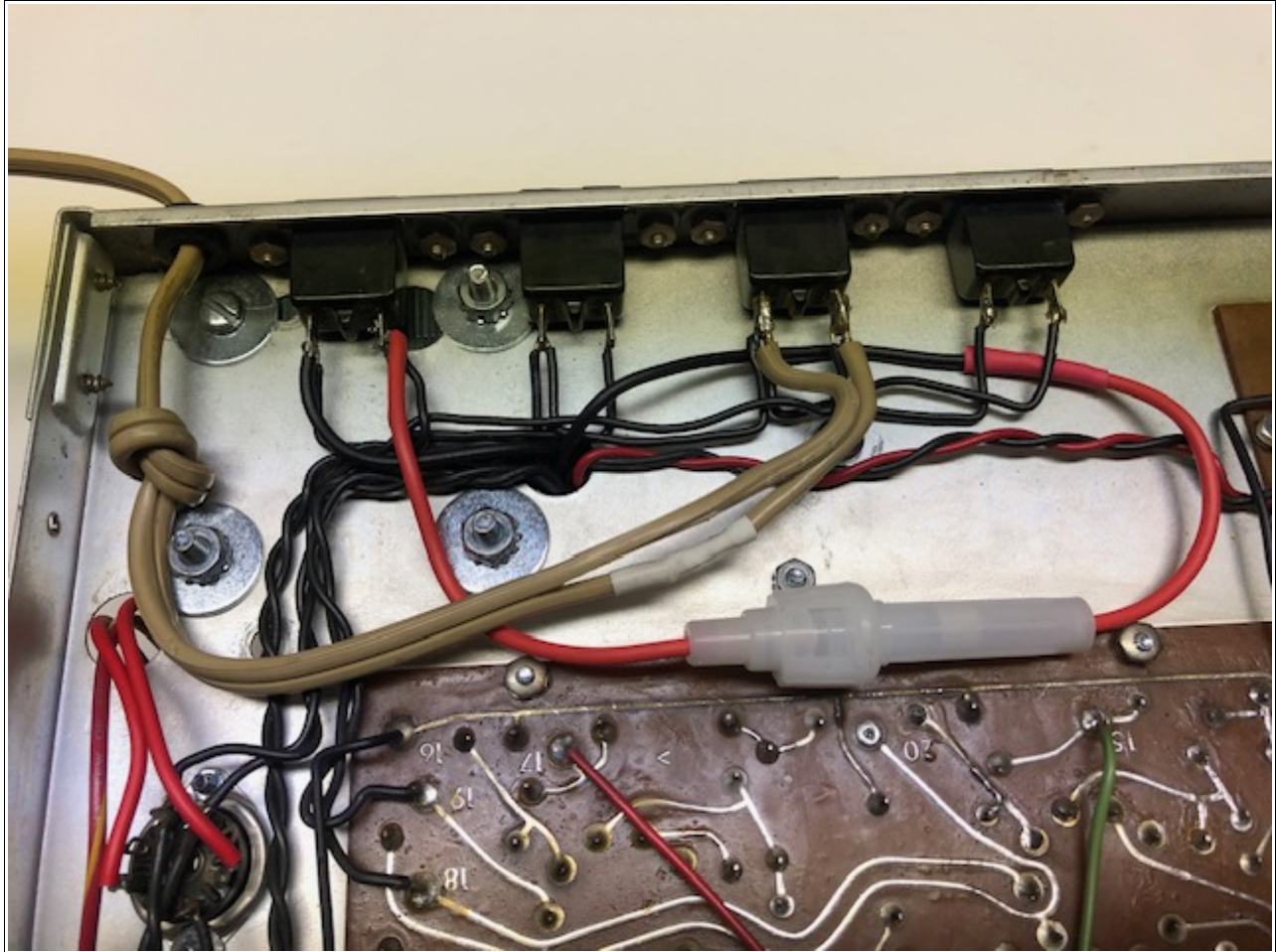
PHOTO "C"





Our PA-211-B (6) Month warranty requires you to install a ¼ amp (250mA) Slo-Blo fuse at the 120 vac supply. Included with your PA-211-B purchase is a basic inline fuse holder & ¼ amp fuse. See Photo (D) for suggested location of this fuse holder and/or wiring. Please refer to the original Dynaco PAS manual for all other transformer wiring connections.

PHOTO "D"



Our new PA-211-B transformer has been re-engineered using improved materials and added lamination steel resulting in a physically larger & heavier unit of exactly double the weight of the original Dynaco PA-211. Rigorous testing insures this new transformer design is more than capable of meeting the demands of the original Dynaco PAS circuit.

On a final note: Leaving your PAS unit running for long extended hours has proved to be the most common cause of the original PA-211 transformer failures. This can cause a condition referred to as Thermal Runaway...a common problem with many power transformers both large & small. Simply turn off the power when not in use.

Thank you for this purchase.....

Dynakit