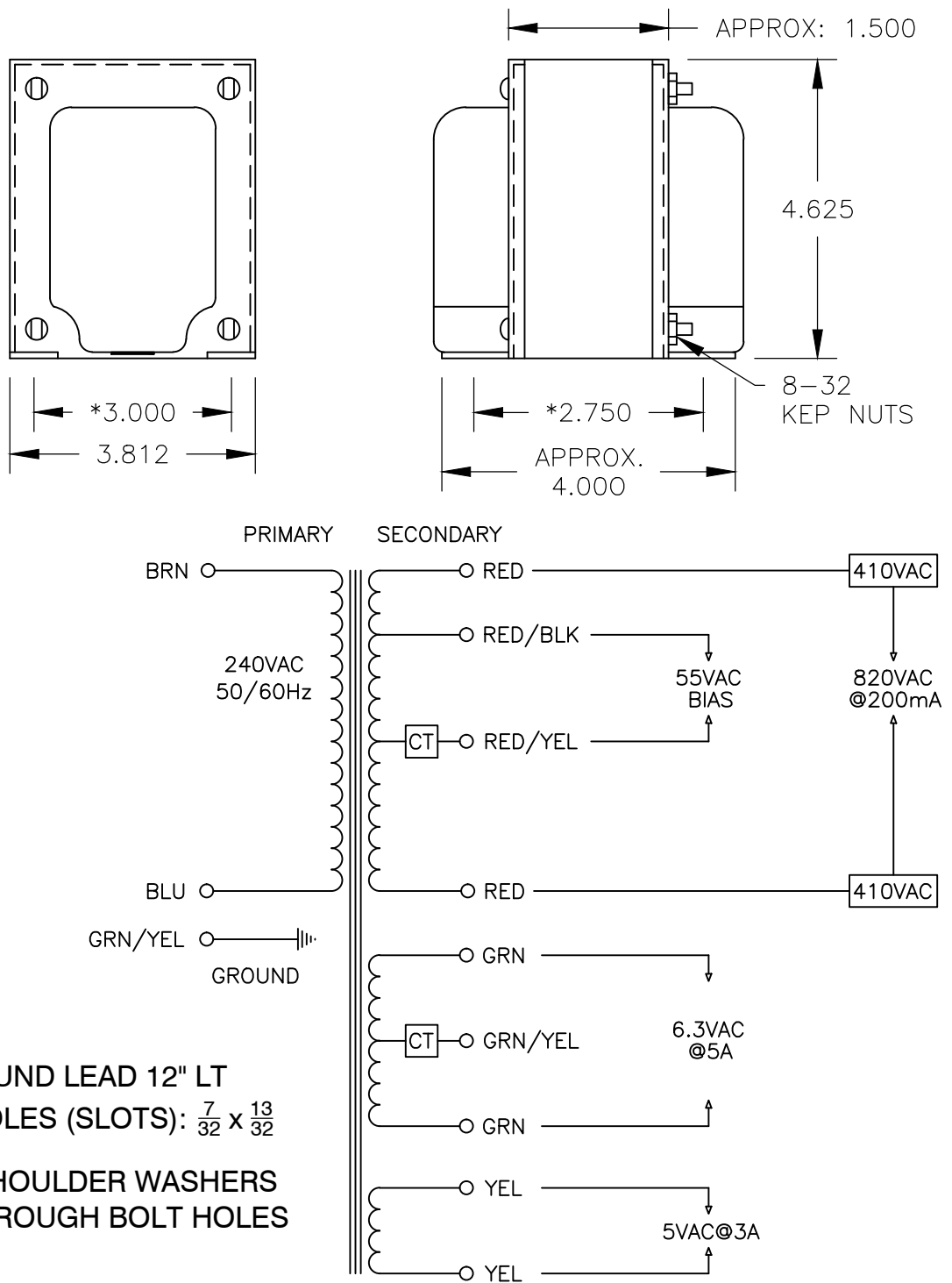


DYNAKIT P-782-S

POWER TRANSFORMER



- LEADS 10" LT.
- GRN/YEL GROUND LEAD 12" LT
- MOUNTING HOLES (SLOTS): $\frac{7}{32} \times \frac{13}{32}$
- USE NYLON SHOULDER WASHERS ON COVER THROUGH BOLT HOLES

* DENOTES CRITICAL DIMENSIONS